



emad™

Tailor degrees of damping and attack without removing the head or reaching inside the drum. The EMAD is a 10mil single-ply with two interchangeable damping rings that maximize attack and low-end. The coating adds additional warmth, focus, and depth. The GMAD is a 12mil single-ply version of the original EMAD that adds punch, low end, and 20% extra durability. The EMAD2 has an outer ply of 6.5mil and an inner ply of 10mil to enhance attack, focus, and durability.

inkedbyevans.com

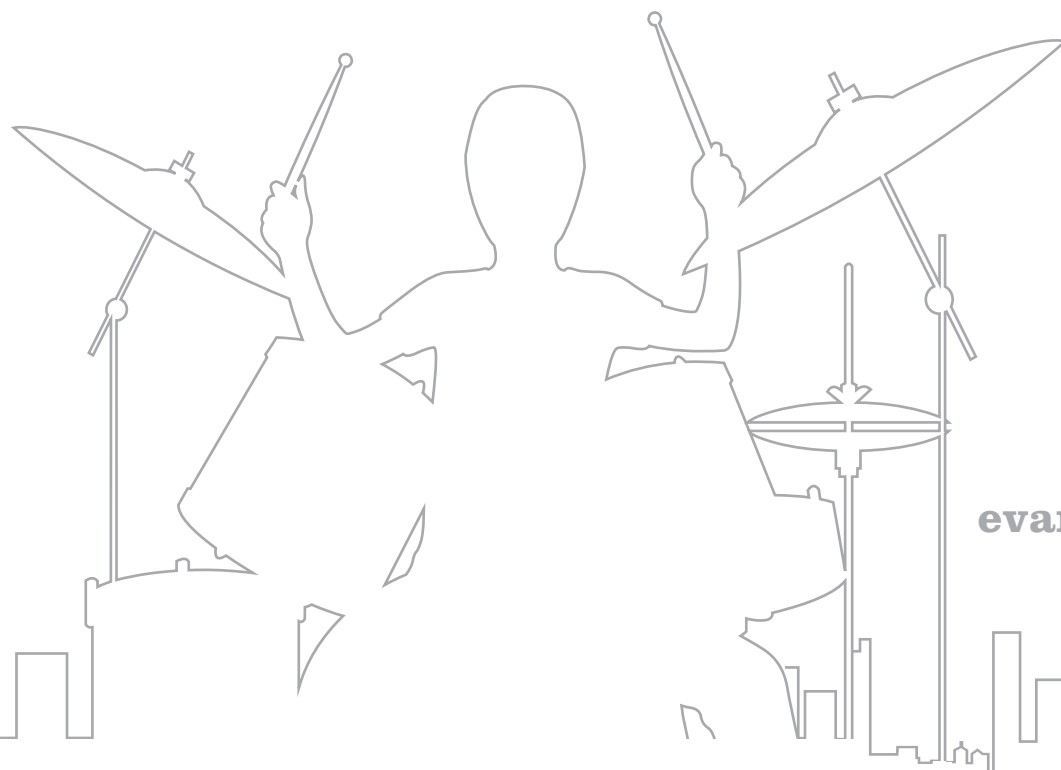
The Inked by Evans custom front bass drum heads are made using a high-resolution printing system, resulting in photographic-quality images. Instead of printing and applying a laminate, like many other custom bass heads, the image is printed directly onto the drumhead, resulting in an uncompromised sound.



g1

The single-ply industry standard, G1s blend warmth, sustain, and articulation. The high-performance 10mil film ensures that the G1s are both durable and expressive. Excellent option for tom resonant heads.

EVANS



evansdrumheads.com

tom & snare heads



G1™

The single-ply industry standard, G1s blend warmth, sustain, and articulation. The high-performance 10mil film ensures that the G1s are both durable and expressive. Excellent option for tom resonant heads.

Clear Item#	Diameter	Retail
TT06G1	6"	\$21.00
TT08G1	8"	\$22.00
TT10G1	10"	\$23.00
TT12G1	12"	\$24.50
TT13G1	13"	\$26.00
TT14G1	14"	\$27.50
TT15G1	15"	\$29.00
TT16G1	16"	\$30.50
TT18G1	18"	\$38.00
TT20G1	20"	\$43.50

Coated Item#	Diameter	Retail
B06G1	6"	\$21.00
B08G1	8"	\$22.00
B10G1	10"	\$23.00
B12G1	12"	\$24.50
B13G1	13"	\$26.00
B14G1	14"	\$27.50
B15G1	15"	\$29.00
B16G1	16"	\$30.50
B18G1	18"	\$38.00
B20G1	20"	\$43.50

choose your tone

- clear** for an open, bright tone.
- coated** for added warmth & brush texture.
- same price!**



G Plus™

Using an exclusive 12mil film, the G Plus delivers the open and warm tone of a single-ply while the added thickness provides increased durability, attack, and projection for hard hitters. On snare, the head produces a definitive "crack" while maintaining an ambient sound. The coating adds additional warmth, focus, and depth. Excellent option for tom resonant heads.

Clear Item#	Diameter	Retail
TT06GP	6"	\$21.00
TT08GP	8"	\$22.00
TT10GP	10"	\$23.00
TT12GP	12"	\$24.50
TT13GP	13"	\$26.00
TT14GP	14"	\$27.50
TT15GP	15"	\$29.00
TT16GP	16"	\$30.50
TT18GP	18"	\$38.00
TT20GP	20"	\$43.50

Coated Item#	Diameter	Retail
B06GPW	6"	\$21.00
B08GPW	8"	\$22.00
B10GPW	10"	\$23.50
B12GPW	12"	\$24.50
B13GPW	13"	\$26.00
B14GPW	14"	\$27.50
B15GPW	15"	\$29.00
B16GPW	16"	\$30.50
B18GPW	18"	\$38.00
B20GPW	20"	\$43.50



The G Plus gives me a fresh new sound, they sound great!

jojo mayer



Power Center™

A single-ply series with a reverse dot, the Power Center tom heads utilize 10mil film on sizes 6-12" to produce optimal tone and sustain, and 12mil film for sizes 13-18" for enhanced punch, control and low-end power. The reinforcement patch includes stress-relief slots that allow the head to vibrate freely and prevent choking while still adding durability, attack, and control for a live and punchy sound.

10mil Item#	Diameter	Retail
TT06PC1	6"	\$25.00
TT08PC1	8"	\$26.00
TT10PC1	10"	\$27.00
TT12PC1	12"	\$28.00

12mil Item#	Diameter	Retail
TT13PC1	13"	\$30.00
TT14PC1	14"	\$32.00
TT15PC1	15"	\$34.00
TT16PC1	16"	\$36.00
TT18PC1	18"	\$43.50

top 10 best-selling items

- | | |
|--------------|--------------------|
| 1. EC2 w/SST | 6. HD Dry |
| 2. G2 | 7. Power Center |
| 3. EMAD | 8. G Plus |
| 4. G1 | 9. Genera Dry |
| 5. EMAD2 | 10. EC Reverse Dot |



J1™ Etched

J for "Jazz." These 10mil single-ply heads have an etched finish that's ideal for brushes, but doesn't chip away under sticks. With maximized sustain and frequency balance, the J1 emits a natural earthiness similar to calf skin but without the problems. Excellent option for tom resonant heads.

Item#	Diameter	Retail
E06J1	6"	\$25.00
E08J1	8"	\$26.00
E10J1	10"	\$27.00
E12J1	12"	\$28.00

Item#	Diameter	Retail
E13J1	13"	\$30.00
E14J1	14"	\$32.00
E15J1	15"	\$34.00
E16J1	16"	\$36.00



G2™

A two-ply head (7mil each) featuring consistency and durability, the G2 offers the perfect blend of depth, sustain, and attack. It makes small toms sing and floor toms growl.

Clear Item#	Diameter	Retail
TT06G2	6"	\$21.00
TT08G2	8"	\$22.00
TT10G2	10"	\$23.00
TT12G2	12"	\$24.50
TT13G2	13"	\$26.00
TT14G2	14"	\$27.50
TT15G2	15"	\$29.00
TT16G2	16"	\$30.50
TT18G2	18"	\$38.00
TT20G2	20"	\$43.50

Coated Item#	Diameter	Retail
B06G2	6"	\$21.00
B08G2	8"	\$22.00
B10G2	10"	\$23.00
B12G2	12"	\$24.50
B13G2	13"	\$26.00
B14G2	14"	\$27.50
B15G2	15"	\$29.00
B16G2	16"	\$30.50
B18G2	18"	\$38.00
B20G2	20"	\$43.50



tommy igoe
on ec2s

EC2™ (Edge Control)

EC2 tom heads feature Sound Shaping Technology™, a new ink-based damping technique that insures optimized performance for each individually sized drumhead. Made using 2 plies of 7mil film, the new design increases attack, tone, length of sustain, and ease of tuning for each size head...delivering a more balanced and pre-EQ'd sound across the full kit. *US Patent # 7,214,867

Clear Item#	Diameter	Retail
TT06EC2S	6"	\$25.00
TT08EC2S	8"	\$26.00
TT10EC2S	10"	\$27.00
TT12EC2S	12"	\$28.00
TT13EC2S	13"	\$30.00
TT14EC2S	14"	\$32.00
TT15EC2S	15"	\$34.00
TT16EC2S	16"	\$36.00
TT18EC2S	18"	\$43.50

Frosted Item#	Diameter	Retail
B06EC2S	6"	\$25.00
B08EC2S	8"	\$26.00
B10EC2S	10"	\$27.00
B12EC2S	12"	\$28.00
B13EC2S	13"	\$30.00
B14EC2S	14"	\$32.00
B15EC2S	15"	\$34.00
B16EC2S	16"	\$36.00
B18EC2S	18"	\$43.50



chris pennie
on onyx

Onyx™

The Onyx tom heads are designed with two plies of 7.5mil film that will deliver enhanced durability while making the drums cut live. A frost coating gives the Onyx heads a matte black appearance and increases low-end response and attack. The Onyx tom heads are pitch black and rock solid.

Item#	Diameter	Retail
B06ONX2	6"	\$27.00
B08ONX2	8"	\$28.00
B10ONX2	10"	\$29.00
B12ONX2	12"	\$31.00
B13ONX2	13"	\$33.00

Item#	Diameter	Retail
B14ONX2	14"	\$35.00
B15ONX2	15"	\$37.00
B16ONX2	16"	\$39.00
B18ONX2	18"	\$46.50
B20ONX2	20"	\$57.00

Hydraulic Glass

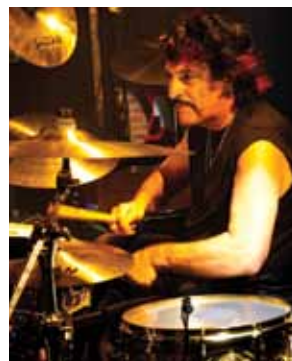
Item#	Diameter	Retail
TT06HG	6"	\$25.00
TT08HG	8"	\$26.00
TT10HG	10"	\$27.00
TT12HG	12"	\$28.00
TT13HG	13"	\$30.00
TT14HG	14"	\$32.00
TT15HG	15"	\$34.00
TT16HG	16"	\$36.00
TT18HG	18"	\$43.50
TT20HG	20"	\$51.50

Hydraulic Black

Item#	Diameter	Retail
TT06HGB	6"	\$27.00
TT08HGB	8"	\$28.00
TT10HGB	10"	\$29.00
TT12HGB	12"	\$31.00
TT13HGB	13"	\$33.00
TT14HGB	14"	\$35.00
TT15HGB	15"	\$37.00
TT16HGB	16"	\$39.00
TT18HGB	18"	\$46.50
TT20HGB	20"	\$57.00

Hydraulic Blue

Item#	Diameter	Retail
TT06HB	6"	\$24.00
TT08HB	8"	\$26.00
TT10HB	10"	\$27.00
TT12HB	12"	\$28.00
TT13HB	13"	\$30.00
TT14HB	14"	\$32.00
TT15HB	15"	\$34.00
TT16HB	16"	\$36.00
TT18HB	18"	\$43.50
TT20HB	20"	\$51.50



These heads are great!
They make my kit rock!

carminc appice



Fusion Packs (10", 12", 14")

Description	Item#	Retail
G1 Clear	ETP-G1CLR-F	\$67.00
G1 Coated	ETP-G1CTD-F	\$67.00
G Plus Coated	ETP-GPCTD-F	\$67.00
G2 Clear	ETP-G2CLR-F	\$67.00
G2 Coated	ETP-G2CTD-F	\$67.00
EC2 Clear	ETP-EC2SCLR-F	\$78.00
EC2 Frosted	ETP-EC2SCTD-F	\$78.00
Power Center	ETP-PCICLR-F	\$78.00
Hydraulic	ETP-HYDGL-F	\$78.00
Onyx	ETP-ONX2-F	\$85.50

Rock Packs (10", 12", 16")

Description	Item#	Retail
G1 Clear	ETP-G1CLR-R	\$70.00
G1 Coated	ETP-G1CTD-R	\$70.00
G Plus Coated	ETP-GPCTD-R	\$70.00
G2 Clear	ETP-G2CLR-R	\$70.00
G2 Coated	ETP-G2CTD-R	\$70.00
EC2 Clear	ETP-EC2SCLR-R	\$89.50
EC2 Frosted	ETP-EC2SCTD-R	\$89.50
Power Center	ETP-PCICLR-R	\$89.50
Hydraulic	ETP-HYDGL-R	\$89.50
Onyx	ETP-ONX2-R	\$89.00

Standard Packs (12", 13", 16")

Description	Item#	Retail
G1 Clear	ETP-G1CLR-S	\$72.00
G1 Coated	ETP-G1CTD-S	\$72.00
G Plus Coated	ETP-GPCTD-S	\$72.00
G2 Clear	ETP-G2CLR-S	\$72.00
G2 Coated	ETP-G2CTD-S	\$72.00
EC2 Clear	ETP-EC2SCLR-S	\$84.50
EC2 Frosted	ETP-EC2SCTD-S	\$84.50
Power Center	ETP-PCICLR-S	\$84.50
Hydraulic	ETP-HYDGL-S	\$84.50
Onyx	ETP-ONX2-S	\$93.00



Power Center™

The 10mil single-ply Power Center offers durability and focus in the center via a 5mil patch. Unique slots in the 5" diameter dot allow it to flex, keeping the head open at the edges. The Reverse Dot head moves the dot to the underside, and out of the way for brushes. *US Patent #5,986,196

Power Center

Item#	Diameter	Retail
B13G1D	13"	\$30.00
B14G1D	14"	\$32.00

Power Center Reverse Dot

Item#	Diameter	Retail
B10G1RD	10"	\$27.00
B12G1RD	12"	\$28.00
B13G1RD	13"	\$30.00
B14G1RD	14"	\$32.00



EC™ & EC1™ Snare Batter*

EC Snare heads combine Evans' "Edge Control" technology that pre-EQs the sound, removing troublesome mid-range overtones that muddy the snare drum's sound. The addition of a specially designed patch on the Reverse Dot models lends extra durability, focus, and attack in the center. *US Patent # 7,214,867

EC (2-ply)			EC Reverse Dot (2-ply)		
Item#	Diameter	Retail	Item#	Diameter	Retail
B10ECS	10"	\$29.00	B10ECSR	10"	\$29.00
B12ECS	12"	\$31.00	B12ECSR	12"	\$31.00
B13ECS	13"	\$33.00	B13ECSR	13"	\$33.00
B14ECS	14"	\$35.00	B14ECSR	14"	\$35.00

EC1 Reverse Dot (1-ply)

Item#	Diameter	Retail
B13EC1RD	13"	\$33.00
B14EC1RD	14"	\$35.00

tom resonant heads



Genera™ Resonant

Genera Resonants have brighter overtones than the G1. The line offers bright, open sustain with any batter head.

Item#	Diameter	Retail
TT06GR	6"	\$21.00
TT08GR	8"	\$22.00
TT10GR	10"	\$23.00
TT12GR	12"	\$24.50
TT13GR	13"	\$26.00

Item#	Diameter	Retail
TT14GR	14"	\$27.50
TT15GR	15"	\$29.00
TT16GR	16"	\$30.50
TT18GR	18"	\$38.00



Resonant Glass & Black

Resonant Glass and Black heads are the thinnest resonant heads we make. When used with either a single or two-ply head, they will increase attack and shorten sustain.

Resonant Glass

Item#	Diameter	Retail
TT06RGL	6"	\$21.00
TT08RGL	8"	\$22.00
TT10RGL	10"	\$23.00
TT12RGL	12"	\$24.50
TT13RGL	13"	\$26.00
TT14RGL	14"	\$27.50
TT15RGL	15"	\$29.00
TT16RGL	16"	\$30.50
TT18RGL	18"	\$38.00

Resonant Black

Item#	Diameter	Retail
TT06RBG	6"	\$25.00
TT08RBG	8"	\$26.00
TT10RBG	10"	\$26.00
TT12RBG	12"	\$28.00
TT13RBG	13"	\$30.00
TT14RBG	14"	\$32.00
TT15RBG	15"	\$34.00
TT16RBG	16"	\$36.00
TT18RBG	18"	\$43.50



Genera™ and HD™ (Heavy Duty)

The Genera is a 10mil 1-ply with the fat spread of a double-ply. The HD is a durable 2-ply (5mil external, 7.5mil internal) that barks live, yet is ideal for the studio. Both models feature a 2mil overtone control ring on the underside that "floats" with the head, suppressing excessive overtones and controlling sustain. The "Dry" versions feature small vent holes around the edge that eliminate stray harmonics and tighten the sound.

Genera

Item#	Diameter	Retail
B12GEN	12"	\$28.00
B13GEN	13"	\$30.00
B14GEN	14"	\$32.00

Genera Dry

Item#	Diameter	Retail
B12DRY	12"	\$28.00
B13DRY	13"	\$29.00
B14DRY	14"	\$32.00

HD

Item#	Diameter	Retail
B12HD	12"	\$28.00
B13HD	13"	\$30.00
B14HD	14"	\$32.00

HD Dry

Item#	Diameter	Retail
B12HDD	12"	\$28.00
B13HDD	13"	\$29.00
B14HDD	14"	\$32.00



Hydraulic Snare Batter

A durable head, the Hydraulic snare has a short sustain that emphasizes the fundamental tone of your drum. A blanket cure for troublesome snare drums and reflective rooms, this Evans veteran is back in the high life.

Hydraulic Black Snare Coated

Item#	Diameter	Retail
B14HBG	14"	\$35.00

Hydraulic Blue Snare Coated

Item#	Diameter	Retail
B14HB	14"	\$35.00



My EC2 batters and G1 Resonant give me the best recorded tom sound I have ever had.

mark schulman, pink



EC™ Resonant (Edge Control)*

The EC Resonant has the ability to control and correct tuning inconsistencies while offering a more centered pitch, increased resonance and dynamic range, and enhanced projection. Made with a 10mil ultra-clear film that provides a mid-range frequency bump, the EC Resonant highlights the natural sound of the drum. *US Patent # 7,214,867

Item#	Diameter	Retail
TT06ECR	6"	\$25.00
TT08ECR	8"	\$26.00
TT10ECR	10"	\$27.00
TT12ECR	12"	\$28.00
TT13ECR	13"	\$30.00

Item#	Diameter	Retail
TT14ECR	14"	\$32.00
TT15ECR	15"	\$34.00
TT16ECR	16"	\$36.00
TT18ECR	18"	\$43.50



ST™ (Super Tough) and ST™ Dry

Packing two layers of 7.5mil film, the ST promotes durability and a full-bandwidth rim shot. It delivers all the volume and ring needed, yet amazingly responds to the flick of a fingernail. On the "Dry" version, small vent holes around the edge eliminate stray harmonics and tighten the sound.

ST

Item#	Diameter	Retail
B13ST	13"	\$30.00
B14ST	14"	\$32.00

ST Dry

Item#	Diameter	Retail
B13STD	13"	\$30.00
B14STD	14"	\$32.00



Hybrid™ Coated Drum Set Snare

By utilizing two unique high-tensile fibers, one chosen for flexibility and the other for durability, the Hybrid snare batter achieves greater snare response and dynamic range, while maintaining the extreme durability and accentuated attack preferred by the hardest hitters.

Item#	Diameter	Retail
B13MHG	13"	\$103.00
B14MHG	14"	\$111.50

snare side heads



Snare Side 200

The 2mil 200 snare side will enhance sensitivity for softer dynamics and brushwork, while reducing sustain for greater articulation.

Item#	Diameter	Retail
S10H20	10"	\$21.50
S12H20	12"	\$23.00
S13H20	13"	\$23.50
S14H20	14"	\$25.00

Snare Side 300

The 300 is Evans' most versatile snare side head. The 3mil film yields a wide dynamic range and controlled snare response at all dynamic levels.

Item#	Diameter	Retail
S08H30	8"	\$21.00
S10H30	10"	\$21.50
S12H30	12"	\$23.00
S13H30	13"	\$23.50
S14H30	14"	\$25.00
S15H30	15"	\$26.00

Snare Side 500

The 5mil 500 snare side produces a dark, throaty sound that is best suited for deep drums, or heavy rock performances.

Item#	Diameter	Retail
S13R50	13"	\$23.50
S14R50	14"	\$25.00

snare head bulk 10 packs

Item#	Description	Retail
B14G1-B	14" G1 Coated Bulk Pack	\$275.00 (\$27.50 ea)
B14G2-B	14" G2 Coated Bulk Pack	\$275.00 (\$27.50 ea)
B14G1D-B	14" Power Center Coated Bulk Pack	\$320.00 (\$32.00 ea)
B14G1RD-B	14" Power Center Rev. Dot Coated Bulk Pack	\$320.00 (\$32.00 ea)
B14DRY-B	14" Genera Dry Coated Bulk Pack	\$320.00 (\$32.00 ea)
B14HDD-B	14" HD (Heavy Duty) Dry Coated Bulk Pack	\$320.00 (\$32.00 ea)
B14ST-B	14" ST (Super Tough) Coated Bulk Pack	\$320.00 (\$32.00 ea)

A bulk pack rack is available for free with the purchase of any 2 bulk packs.



Tom and Snare Pack Display

The 3-tier Tom and Bulk Pack display can accommodate up to SIX tom packs or ONE bulk 10-piece pack per tier. It can be hung on slatwall or peg wall, and has a kick-stand on the back to make it free-standing or countertop display. Load it with snare bulk packs and position it near the snare drum selection or load it with tom packs and position next to a featured drum set on the retail floor. Either way, it'll drive up those impulse, add-on sales that every retailer lives by.

Item#	Description
EMS-TSPB	Evans Tom and Snare Pack Display

afro cuban & conga heads



Tri-Center™ Bongo

The Tri-Center Bongo heads deliver a bright, penetrating slap with a full, round bottom end, and feature a natural-feeling coating which simulates the touch and response of a natural head. A new tooth-grip extruded hoop*, combined with laser cuts** around the collar, ensures a clean look, precision tuning, and flawless performances at high tension, while the Tri-Center removes unwanted overtones and enhances the fundamental.

Item#	Description	Retail
EB07	7-1/4" Bongo Head	\$66.00
EB09	8-5/8" Bongo Head	\$68.00

Fits: LP® Valje & Generation II, Meinl Fibercraft & Wood FWB400, Toca® 4500 & 4600

Bongo Combo Pack

Get both heads at one economical price with this combo pack

Item#	Description	Retail
EB0709	7-1/4" and 8-5/8" (1 each)	\$120.00

J1™ Etched For Timbale

These single-ply, 10mil heads have a specially etched finish that combines the sustain of an uncoated head with the warmth of a traditional coating. The Evans J1 head delivers a brilliant rimshot without sacrificing depth. Warm and dense in the center with a full sustain at the edges.



Item#	Diameter	Retail
E06J1	6"	\$25.00
E08J1	8"	\$26.00
E10J1	10"	\$27.00
E12J1	12"	\$28.00
E13J1	13"	\$30.00
E14J1	14"	\$31.00
E15J1	15"	\$34.00
E16J1	16"	\$36.00

Fits most manufacturer's timbales.
Specifications subject to change without notice.

*US Patent #6,350,941
**US Patent #6,184,451



If you want to play in tune and have great tone, use these heads.

rolando morales-matos

Tri-Center™ Conga

Evans conga heads provide superior tone, reliable durability, and unsurpassed resistance to climatic and temperature changes. A tapered hoop* provides better fit on out-of-spec drums, and "v"-shaped laser cut** radial slits help seat the head. The Tri-Center dot removes unwanted overtones and adds weight to the center, thus dropping the fundamental frequency and producing more low end.

For LP® Classic Models with "Comfort Curve" Hoop

Item#	Description	Retail
EC1100	Fits 11" LP Professional Series	\$102.00
EC1175	Fits 11-3/4" LP Professional Series	\$104.00
EC1250	Fits 12-1/2" LP Professional Series	\$106.00

Fits Classic/Salsa/Valje (tight fit)/Gio Old Models/Original & Patato Fiberglass/Old Galaxy® Fiberglass.
EC1100 also serves as replacement head for LP's Compact Conga.

For LP® Giovanni Models with "Comfort Curve" Hoop

Item#	Description	Retail
EC0975	Fits LP 9-3/4" Requinto	\$100.00
EC1100E	Fits LP 11" Conga	\$102.00
EC1175E	Fits LP 11-3/4" Conga	\$104.00
EC1250E	Fits LP 12-1/2" Conga	\$106.00

For Toca® Professional models with "Easy Play" Hoop

Item#	Description	Retail
EC1100	Fits 11" Toca Professional Series	\$102.00
EC1175	Fits 11-3/4" Toca Professional Series	\$104.00
EC1250	Fits 12-1/2" Toca Professional Series	\$106.00

Fits Limited Edition (LE), Custom Deluxe, and Premier models.
For 11-3/4" Premier, use EC 1175E.



emad bass batter & reso heads



Choice of 2 foam rings

EMAD™ (Externally Mounted Adjustable Damping*) Bass Batter Head

Tailor degrees of damping and attack without removing the head or reaching inside the drum. The EMAD is a 10mil single-ply with two interchangeable damping rings that maximize attack and low-end. The coating adds additional warmth, focus, and depth. The GMAD is a 12mil single-ply version of the original EMAD that adds punch, low end, and 20% extra durability. The EMAD2 has an outer ply of 6.5mil and an inner ply of 10mil to enhance attack, focus, and durability.



*Protected by US Patent# 6,291,754

EMAD Clear (10mil single-ply)

Item#	Diameter	Retail
BD18EMAD	18"	\$77.00
BD20EMAD	20"	\$80.00
BD22EMAD	22"	\$84.00
BD24EMAD	24"	\$88.00
BD26EMAD	26"	\$96.00

GMAD Clear (12mil single-ply)

Item#	Diameter	Retail
BD18GMAD	18"	\$77.00
BD20GMAD	20"	\$80.00
BD22GMAD	22"	\$84.00
BD24GMAD	24"	\$88.00
BD26GMAD	26"	\$96.00

EMAD Coated (10mil single-ply)

Item#	Diameter	Retail
BD18EMADCW	18"	\$77.00
BD20EMADCW	20"	\$80.00
BD22EMADCW	22"	\$84.00
BD24EMADCW	24"	\$88.00
BD26EMADCW	26"	\$96.00

EMAD2 Clear (2-ply)

Item#	Diameter	Retail
BD18EMAD2	18"	\$77.00
BD20EMAD2	20"	\$80.00
BD22EMAD2	22"	\$84.00
BD24EMAD2	24"	\$88.00
BD26EMAD2	26"	\$96.00



The EMAD makes my kick sound big and fat.

roy mayorga, stone sour

EMAD™ Onyx Bass Batter Head

The EMAD Onyx utilizes a single ply of 10mil black film with an improved EMAD damping ring and a frosted coating that produces an extra dark sound while delivering additional punch. It's the perfect aesthetic and sonic compliment to the Onyx tom heads and Onyx bass resonant.

Item#	Diameter	Retail
BD20EMADONX	20"	\$88.50
BD22EMADONX	22"	\$95.00



EMAD™ Bass Resonant Head

A 7.5mil head with a fixed internal ring, the EMAD Resonant features an improved ring design. Like the EMAD batter, a black plastic sleeve holds in place a foam damping ring that controls overtones around the edge of the 4" offset port, focusing the pitch and enhancing attack. The ring also provides protection for the mic port.

Item#	Diameter	Retail
BD18REMAD	18"	\$84.50
BD20REMAD	20"	\$88.50
BD22REMAD	22"	\$95.00
BD24REMAD	24"	\$101.00
BD26REMAD	26"	\$109.00



The redesigned EMAD Resonant Control Ring adds durability, attack, control and low-end.

EMAD™ System Pack

The EMAD System Pack is a 22" EMAD batter head and a 22" Resonant EMAD head in one convenient package designed to deliver the ideal balance of punch, power, and low-end at a reduced price compared to buying the heads individually.

Item#	Diameter	Retail
EBP-EMADSYS	22"	\$164.00



\$AVE

eq bass batter heads



EQ1™ Bass Batter Heads

This single-ply head with an internal overtone control ring, a removable muffle ring, and dry-vents provides a definitive, out-of-the-box mix of punch and tone. It can thump for rock or sing for jazz. The frosted version gives a little extra warmth and punch.

Item#	Diameter	Retail
BD18GB1	18"	\$80.50
BD20GB1	20"	\$84.50
BD22GB1	22"	\$91.50
BD24GB1	24"	\$100.00
BD26GB1	26"	\$106.00

Item#	Diameter	Retail
BD18GB1C	18"	\$80.50
BD20GB1C	20"	\$84.50
BD22GB1C	22"	\$90.50
BD24GB1C	24"	\$100.00
BD26GB1C	26"	\$106.00

EQ2™ Bass Batter Heads

An extra-durable two-ply head with an internal overtone control ring, a removable muffle ring and dry-vents, the EQ2 gives the microphone what it wants to hear, yet can project controlled spread without mics.

Item#	Diameter	Retail
BD18GB2	18"	\$80.50
BD20GB2	20"	\$84.50
BD22GB2	22"	\$91.50

Item#	Diameter	Retail
BD24GB2	24"	\$100.00
BD26GB2	26"	\$106.00

EQ3™ Bass Batter Heads

The two-ply EQ3 with an internal overtone control ring and removable muffle ring puts the kick back in kick drum. Controlled low-end rumble and focused attack make it the perfect live head. Due to its two plies, it will not distort under heavy hitting. The coated version lends a little warmth.

Item#	Diameter	Retail
BD18GB3	18"	\$80.50
BD20GB3	20"	\$84.50
BD22GB3	22"	\$91.50
BD24GB3	24"	\$100.00
BD26GB3	26"	\$106.00

Item#	Diameter	Retail
BD18GB3C	18"	\$80.50
BD20GB3C	20"	\$84.50
BD22GB3C	22"	\$91.50
BD24GB3C	24"	\$100.00
BD26GB3C	26"	\$106.00

EQ4™ Bass Batter Heads

Provides optimum slap without sacrificing bottom end. You kick the EQ4 and it kicks back! A special film makes this 10mil single-ply extra rugged and the width of the fixed internal ring is proportional to the head size, optimizing control from 18" to 26".

Item#	Diameter	Retail
BD18GB4	18"	\$61.00
BD20GB4	20"	\$65.00
BD22GB4	22"	\$70.00
BD24GB4	24"	\$75.00
BD26GB4	26"	\$81.50

Item#	Diameter	Retail
BD18GB4C	18"	\$61.00
BD20GB4C	20"	\$65.00
BD22GB4C	22"	\$70.00
BD24GB4C	24"	\$75.00
BD26GB4C	26"	\$81.50

eq bass reso heads



EQ1™ Resonant Bass Heads

This solid resonant head with an internal overtone control ring and dry-vents produces a cavernous rumble that is microphone-friendly. It also responds with a clean fundamental and a controlled, but full, sustain when tuned high for jazz and pop.

Item#	Diameter	Retail
BD18RA	18"	\$72.00
BD20RA	20"	\$77.00
BD22RA	22"	\$83.50
BD24RA	24"	\$93.00
BD26RA	26"	\$102.00

Item#	Diameter	Retail
BD18RACW	18"	\$72.00
BD20RACW	20"	\$77.00
BD22RACW	22"	\$83.50
BD24RACW	24"	\$93.00
BD26RACW	26"	\$102.00



EQ3™ Resonant Bass Heads

Featuring the offset 5" hole for internal miking, the EQ3 resonant is the popular choice for both players and engineers. With an internal overtone control ring, this head is made for every miking situation, from the studio to the arena.

Item#	Diameter	Retail
BD18RB	18"	\$72.00
BD20RB	20"	\$77.00
BD22RB	22"	\$83.50
BD24RB	24"	\$93.00
BD26RB	26"	\$102.00

Item#	Diameter	Retail
BD18RSW	18"	\$72.00
BD20RSW	20"	\$77.00
BD22RSW	22"	\$83.50
BD24RSW	24"	\$93.00
BD26RSW	26"	\$102.00

Item#	Diameter	Retail
BD18RGC	18"	\$72.00
BD20RGC	20"	\$77.00
BD22RGC	22"	\$83.50
BD24RGC	24"	\$93.00
BD26RGC	26"	\$102.00

Item#	Diameter	Retail
BD18RCW	18"	\$72.00
BD20RCW	20"	\$77.00
BD22RCW	22"	\$83.50
BD24RCW	24"	\$93.00
BD26RCW	26"	\$102.00

Item#	Diameter	Retail
BD18RONX	18"	\$72.00
BD20RONX	20"	\$77.00
BD22RONX	22"	\$83.50
BD24RONX	24"	\$93.00
BD26RONX	26"	\$102.00

other bass head options



SAVE

EQ3™ Bass Head Set

Contains: 1 EQ3 batter head, 1 EQ3 resonant head, 1 EQ Pad, and 1 EQ Patch

Item#	Description	Retail
BD22B3	22" EQ3 Set Clear/Black	\$195.00



Hydraulic™ Bass Heads

A classic sound, short in sustain. Tension it tight for a real thump or loose and slappy. Two plies sandwich a thin film of oil that suppresses unwanted overtones.

Blue			Black		
Item#	Diameter	Retail	Item#	Diameter	Retail
BD22HB	22"	\$70.00	BD22HGB	22"	\$95.00



Resonant Black Bass Heads

A 7mil single-ply with no rings or vents, the Resonant provides a wide-open tone with maximum sustain. It's ideal for jazz and pop.

Black		
Item#	Diameter	Retail
BD18RBG	18"	\$61.00
BD20RBG	20"	\$65.00
BD22RBG	22"	\$70.00



Retro Screen™ Mesh Bass Resonant Head

Rediscover the punch of a 60's single-headed bass drum sound. The black mesh of the Retro Screen looks good and keeps your shell in round. Zero sympathetic resonance promotes solid oomph!

Item#	Diameter	Retail
BD22SCR	22"	\$70.00



These heads give my drums the punch I need.

Phil Rudd, AC/DC



G1™ Bass Heads

A starting point in traditional bass drum sounds. The G1 is a 10mil single-ply head that provides bright attack, warm sustain, and a broad tuning range.

Clear		
Item#	Diameter	Retail
BD18G1	18"	\$59.00
BD20G1	20"	\$61.00
BD22G1	22"	\$65.00

Coated White		
Item#	Diameter	Retail
BD18G1CW	18"	\$59.00
BD20G1CW	20"	\$61.00
BD22G1CW	22"	\$65.00



G2™ Bass Heads

The two 7mil plies of the G2 bass head offer maximum durability with wide-open response and undeniably fat low-end. A modern, full resonance you can tailor to taste.

Clear		
Item#	Diameter	Retail
BD20G2	20"	\$61.00
BD22G2	22"	\$65.00



Inked Gift Card

Sell custom bass heads over the counter with the Inked by Evans gift card!



Item#	Diameter	Retail
INKCARDB	18"- 26"	\$155.00

Inked Gift Card Counter Display

This simple POP display holds 5 gift cards and makes it clear to your customers exactly how the ordering process works! Item # **INKCARD-POP2**

CREATE YOUR OWN: CUSTOM DESIGN

with the "Inked by Evans" gift card



Upload your own artwork, or select from our designs sizes 18", 20", 22", 24", 26"

1.



Go to www.InkedbyEvans.com and enter the code on the front of the enclosed card

3.



Submit your order.

The "Inked by Evans" program includes a variety of image options:



SHOWCASE — Licensed designs by well-known music artists and graphic designers

GALLERY — Interesting textures, nature scenes, abstract photography, and clever graphics

THE INKED BY EVANS CUSTOM FRONT BASS DRUM HEADS ARE MADE USING A HIGH-RESOLUTION PRINTING SYSTEM, RESULTING IN PHOTOGRAPHIC-QUALITY IMAGES. INSTEAD OF PRINTING AND APPLYING A LAMINATE, LIKE MANY OTHER CUSTOM BASS HEADS, THE IMAGE IS PRINTED DIRECTLY ONTO THE DRUMHEAD, RESULTING IN AN UNCOMPROMISED SOUND.

INKEDBYEVANS.COM

drum keys

Magnetic Head Drum Key

(An NS Design product)

Drop-forged drum key is ergonomically designed for comfort and has a knurled knob for quick, easy spinning. Its magnetic head helps prevent slipping and stays in place for fast tightening and loosening. Rattle-free design: grips tight to a tension rod during play so it won't buzz.

Item#	Retail
DADK	\$18.00



Torque Key

(An NS Design product)

The Evans Torque Key has an ergonomic grip for maximum comfort, a knurled knob for quick spinning, and a slip-resistant magnetized head. The torque handle can be set to a desired tension to help drummers attain more accurate tuning.

Not recommended for use with drum hardware.

Item#	Retail
DATK	\$46.00



torque key demo



Wing Nut Key (Pack of 3)

The Wing Nut Drum Key is designed to keep a drum key always within reach. With an 8mm threaded bore in the ergonomic handle, it screws easily onto standard cymbal posts. Coming in a package of three for a reasonable price, it's a logical purchase for any drummer who has lost a wing nut.

Item#	Retail
DAWK	\$17.99



Drill Bit Key

(An NS Design product)

Drop-forged drill bit key is designed to fit most variable speed cordless drills and screwdrivers. Like the drum key, the bit key has rattle-free design.

Item#	Retail
DABK	\$12.00



bass drum patches

AF Patch™

Made of Aramid Fiber the AF Patch provides unsurpassed durability and emphasizes attack characteristics. Four radial slits along the perimeter allow the head to vibrate naturally for better tone and feel.

Item#	Retail
EQPAF1 (x2)	\$17.00



EQ Bass Drum Patches

Black Nylon

A non-slip flexible Nylon bass drum patch which softens attack and strengthens the head without affecting sound quality.

Item#	Retail
EQPB1 Single Pedal (x2)	\$11.00
EQPB2 Double Pedal (x2)	\$11.00



Clear Plastic

A clear non-slip, plastic bass drum patch which increases attack and strengthens the head without affecting sound quality.

Item#	Retail
EQPC1 Single Pedal (x2)	\$11.00
EQPC2 Double Pedal (x2)	\$11.00



These are the only heads that can last and sound good the way I play.

vinnie paul, hellyeah

sound control

E-Rings™

The E-Ring™ is an easy-to-use external overtone control ring which "floats" on the surface of a drumhead. It removes overtones and flattens the drumhead's sound and allows for easier tuning. Our E-Ring™ PrePaks are designed to match the most common drum set configurations and allow dealers to stock a minimal number of skins in order to meet the needs of customers.

PrePaks™

Item#	Diameter	Retail
ER-STANDARD	12" - 13" - 14" - 16"	\$20.00
ER-FUSION	10" - 12" - 14" (2)	\$17.00
ER-SNARE	14 x 1" - 14 x 1.5"	\$15.00



Filler Packs (10 Packs)

Item#	Diameter	Retail	Item#	Diameter	Retail
E10ER1	10" - 1"	\$49.00	E14ER2	14" - 2"	\$49.00
E12ER15	12" - 1.5"	\$49.00	E15ER2	15" - 2"	\$49.00
E13ER15	13" - 1.5"	\$49.00	E16ER2	16" - 2"	\$49.00
E14ER1	14" - 1"	\$49.00	E18ER2	18" - 2"	\$49.00
E14ER15	14" - 1.5"	\$49.00			



EQ Pad™

The EQ Pad™ is a highly efficient bass drum muffler that attaches to the bottom of the bass drum shell with Velcro®. The hinged pad bounces off the head, allowing sustain, before returning to damp the vibrating head. The new version includes a smaller pad on the opposite end that can be used on smaller drums or for minimal damping.

Item#	Retail
EQPAD	\$41.00



Min-EMAD™

(Externally Mounted Adjustable Damping*)

Trim and unobtrusive, the Min-EMAD removes unwanted frequencies, but retains the desired attack, tone, and feel. By linking the vibrating head with the relatively inert counterhoop, the Min-EMAD removes overtones by resisting the motion of the head.

Item#	Retail
MINEMAD Pack of 6	\$12.00



bass drum tuning & damping techniques

marching accessories



Marching Staccato Disk™*

The Staccato Disk is a flat circle of Retro Screen mesh designed to suppress unwanted overtones. Evans snare side heads come with a built-in flap, which holds the staccato disk in place. This accessory is particularly viable for indoor marching venues where maximum note definition is required.

*US Patent #6,245,979

Item#	Diameter	Retail
EMA13SD	13"	\$21.50
EMA14SD	14"	\$22.50

Marching X-Treme™ Patch**

The X-Treme Patch is the ticket to drawing several sounds – what we call "zones of expression" – out of a single drumhead. A black polycarbonate patch adheres to the head, effectively dividing it into distinct playing areas, each offering its own feel and sound.

**US Patent #s 6,291,753 and 5,986,196

Item#	Retail
EMAXP	\$17.99



NEW! Control Screen

Designed for marching snare drums, the Evans Control Screen offers a simple and effective way to reduce overall volume without sacrificing tone, articulation, or feel. Fitting neatly underneath the drum head, the Evans Control Screen is simple to install and remove as needed. Used by top marching groups, the Evans Control Screen is available in 13" and 14" sizes.

Item#	Size	Retail
EMA13CS1	13"	\$20.00
EMA14CS1	14"	\$21.00



No matter what heads they use, for over 20 years I always use the EQ Pad in our kick drum.

timmy doyle, drum tech
smashing pumpkins,
guns n' roses

puresound snare wires



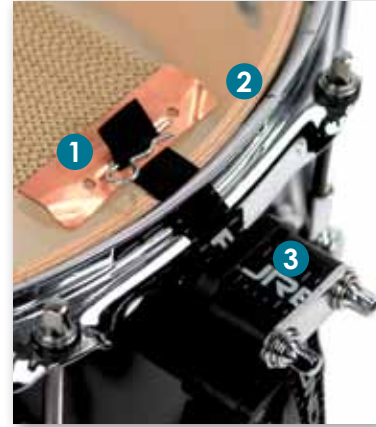
Custom Pro Series

The Custom Pro series of snare wires are the ultimate in ease-of-use. They're designed with Anti-choke™ end plates that significantly reduce annoying snare buzz and also allow the player to crank up their snare tension for a tight response without choking the drum. The Speed Release™ straps allow the player to disengage the snare wires without releasing the straps from the strainer or butt clamps, enabling quick and easy head or wire changes.

Item#	Description	Retail
CPS1320	13" Custom Pro Steel - 20 Strand	\$34.99
CPS1324	13" Custom Pro Steel - 24 Strand	\$34.99
CPS1420	14" Custom Pro Steel - 20 Strand	\$34.99
CPS1424	14" Custom Pro Steel - 24 Strand	\$34.99
CPB1320	13" Custom Pro Brass - 20 Strand	\$34.99
CPB1324	13" Custom Pro Brass - 24 Strand	\$34.99
CPB1420	14" Custom Pro Brass - 20 Strand	\$34.99
CPB1424	14" Custom Pro Brass - 24 Strand	\$34.99

AS EASY AS ...

- Speed Release Strap™** for quick wire or head changes
- Anti-Choke™ End Plates** reduce sympathetic snare buzz & increase wire tension range
- Alignment Marks** for straight and repeatable wire position

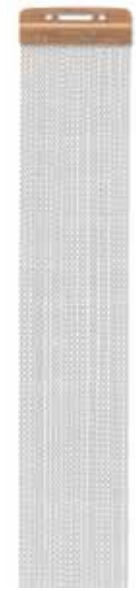


custom pro
snare wire demo



Custom Pros really bring the snare out of my snare drum AND it's hard to believe how easy it is to change them!

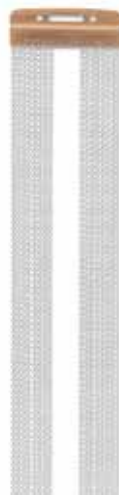
charlie benante, anthrax



Custom Series

Custom Series wires feature medium-gauge wire with evenly spaced, standard coils. The Custom line offers four different strand configurations that can be employed to change the balance between the drum and snare components of the sound. Models with more strands tend to allow the snares to be more active in influencing the sound while those with less strands allow the drum to be more prominent in the overall drum sound.

Item#	Description	Retail
P0812	8" Custom Series - 12 strand	\$29.99
P1016	10" Custom Series - 16 strand	\$29.99
P1216	12" Custom Series - 16 strand	\$29.99
P1220	12" Custom Series - 20 strand	\$29.99
P1316	13" Custom Series - 16 strand	\$29.99
P1320	13" Custom Series - 20 strand	\$29.99
P1324	13" Custom Series - 24 strand	\$29.99
P1416	14" Custom Series - 16 strand	\$29.99
P1420	14" Custom Series - 20 strand	\$29.99
P1424	14" Custom Series - 24 strand	\$29.99
P1520	15" Custom Series - 20 strand	\$29.99



Equalizer Series

The Equalizer line has been created to modify the spread and activity of the snare sound by working in conjunction with the snare drum's natural acoustics and snare bed design. Equalizers feature an offset design that removes the strands from the middle of the drum – in effect decreasing the vibration of the wires. Not only is the snare drum drier and crisper with an Equalizer, it is less influenced by sympathetic vibrations from other drums and instruments.

Item#	Description	Retail
E1312	13" Equalizer Series - 12 strand	\$29.99
E1316	13" Equalizer Series - 16 strand	\$29.99
E1412	14" Equalizer Series - 12 strand	\$29.99
E1416	14" Equalizer Series - 16 strand	\$29.99



Blaster Series

Blasters Series snare wires are professional quality snares developed for high-volume, high-intensity drumming. They feature specially formulated, premium-grade steel-alloy wires on angled, copper-colored end clips. The exclusive bent end clips create greater snare wire contact across the entire surface of the drum head, offering increased activity, consistency, response and projection.

Item#	Description	Retail
B1016	10" Blasters Series - 16 strand	\$29.99
B1220	12" Blasters Series - 20 strand	\$29.99
B1320	13" Blasters Series - 20 strand	\$29.99
B1420	14" Blasters Series - 20 strand	\$29.99



Super 30 Series

The Super 30 Series utilizes the same steel-alloy wires, handcrafted construction methods, and exclusive copper end clips as the Custom Series in a 30-strand format designed to increase snare response and articulation. Compared to other wide-format snare wires, the Puresound Super 30 wires are able to create a distinctive and penetrating sound without choking the drum or sacrificing its feel. Additionally, the Super 30 needs only a slightly wider than normal (3 to 3.5 inch) snare bed for optimum performance.

Item#	Description	Retail
S1230	12" Super 30 Series	\$39.99
S1330	13" Super 30 Series	\$39.99
S1430	14" Super 30 Series	\$39.99



Twisted Series

The Twisted Series are made from twenty double strands of Puresound's premium-grade steel-alloy wire that are braided together – resulting in increased levels of dryness, articulation and response.

Item#	Description	Retail
T1320	13" Twisted Series - 20 double strand	\$49.99
T1420	14" Twisted Series - 20 double strand	\$49.99



Vintage Series

The Vintage Series snare wires are designed not only to replace worn and no longer available wires on vintage snare drums, they are also designed to enhance the performance of those classic drums. With a new set of Puresound wires, Dynasonics, Radio Kings, WFLs and Super-Sensitives will sound and perform as well as, if not better than they did when they were new.

Item#	Description	Retail
E21414	14" Premier 2000 Offset	\$59.99
P21419	14" Premier 2000	\$59.99
PAC1408	14" Premier Ace 2-piece Set	\$59.99
PD1416	14" Dynasonic	\$59.99
PI1419	14" Tama Imperial Star	\$59.99
PF1416	14" Pearl Free-Floating	\$59.99
PJ1416	14" Pearl Jupiter	\$59.99
PL31416	14" W.F. Ludwig w/ 3 screw mounting	\$59.99
PLS1416	14" W.F. Ludwig w/string mounting	\$59.99
PR1416	14" Radio King Clam Shell	\$59.99
PRE1412	14" Radio King ext. length - 12 strand	\$59.99
PRE1416	14" Radio King ext. length - 16 strand	\$59.99
PRS1416	14" Radio King with strap	\$59.99
PS1412	14" Super Sensitive (1920-1968)	\$59.99
PS1416	14" Super Sensitive (1969-Present)	\$59.99
PS1512	15" Super Sensitive (1920-1968)	\$59.99
PSS1420	14" Slingerland Slapshot	\$59.99
PSZ1420	14" Slingerland Zoomatic	\$59.99
PX1416	14" Fibes SFT	\$59.99
PZ1422	14" Sonor Signature Parallel throw off	\$59.99



Concert Series

The Concert Series wires have been developed specifically for use on concert and orchestral snare drums and are made from a specially formulated stainless steel alloy combined with an extended coil pattern to create a deeper, drier, and darker tone with increased articulation for 13" and 14" snare drums.

Item#	Description	Retail
C1312	13" Concert Series - 12 strand	\$29.99
C1316	13" Concert Series - 16 strand	\$29.99
C1412	14" Concert Series - 12 strand	\$29.99
C1416	14" Concert Series - 16 strand	\$29.99

snare accessories



Item#	Description	Retail
MC4	Blue cable strings (4pcs)	\$11.99
MC50	50' spool "blue cable" string	\$49.99
MS4	Black nylon strings (4pcs)	\$10.99
MS50	50' spool black nylon string	\$49.99
MT4	Mylar straps (4pcs)	\$10.99

practice pads



RealFeel™ Practice Pads

RealFeel practice pads are the most popular practice option available. Featuring a natural gum rubber playing surface with a dark gray fabric finish which resists wear and tear, RealFeel practice pads provide the best practice substitute to an acoustic drum. A variety of models are available to suit individual practice requirements. RealFeel practice pads come in self-display cases for easy merchandising.

Item#	Description	Special Features	Retail
RF6GM	6" Mountable Speed Pad	Single-Sided gum rubber surface with an 8mm threaded insert	\$34.99
RF12G	12" Speed Pad	Single-Sided gum rubber surface	\$49.99
RF6D	6" 2-sided Speed & Workout Pad	Two-Sided pad with gum rubber and neoprene surfaces	\$39.99
RF12D	12" 2-sided Speed & Workout Pad	Two-Sided pad with gum rubber and neoprene surfaces	\$59.99

Apprentice™ Beginner Practice Pads

Item#	Description	Special Features	Retail
ARF7GM	Apprentice Pad	7" Single-sided gum rubber pad with an 8mm thread for mounting	\$27.99

EcoPad™ Practice Pads

The EcoPad is the first environmentally friendly practice pad. With rubber made from recycled tires and a base made from residual wood waste materials, the EcoPad provides a great feeling practice surface without killing more trees. The series is comprised of 3 models: a 6" 1-sided mountable pad, a 12" 2-sided pad where the reverse side utilizes a harder recycled rubber surface for increased articulation and a tougher workout, and a 9" pad with an adjustable snare sound simulator on the back side.

Item#	Description	Special Features	Retail
ECO6GM	6" Mountable Practice Pad	Single-Sided recycled rubber surface with an 8mm threaded insert	\$34.99
ECO9SNR	9" Adjustable Snare Practice Pad	Single-Sided recycled rubber surface with adjustable snare unit	\$84.99
ECO12D	12" 2-Sided Practice Pad	Two-Sided pad with recycled rubber surfaces (hard reverse side)	\$59.99



RealFeel™ Folding Bass Pedal Practice Pad

The sturdy, lightweight, and collapsible construction of the RealFeel™ Folding Bass Pedal Practice Pad make it the perfect footwork practice tool for the gigging drummer, student, or hobbyist. The impact pad is wide enough to accommodate a double-pedal and offers a realistic rebound that mimics the action of a drumhead.

Item#	Description	Retail
RFBASS	RealFeel Folding Bass Pad	\$84.99

Apprentice Pad Stand

The Apprentice Pad Stand is a compact, lightweight, and single-braced stand with an 8mm threaded post and pivoting platform for attaching any practice pad fitted with an 8mm threaded mounting insert. The height is adjustable and the post can be tilted to any angle to suit the player's preference. Practice pads fitted with an 8mm threaded mounting insert include the 7" Apprentice Pad, the 6" RealFeel Mountable Speed Pad, and the 6" and 9" EcoPads.

Item#	Retail
ARFSTD	\$59.99



drum set mutes



S014HAT

S020RIDE & S022RIDE



SOBASS



These pads have just the right amount of rebound and the quality is legendary — my pad is still in perfect condition after years of serious work.

tommy igoe

SoundOff™ Drum Mutes

SoundOff drum mutes are the most popular line of volume control products available. The mutes provide significant volume reduction to keep practice noise to a minimum. SoundOff drum mutes feature a durable construction which can withstand frequent practicing. The Universal Bass Mute fits drum sizes 18" to 26" with ease while the fitted cymbal mutes provide a more realistic rebound on ride and hi-hat cymbals. Assorted drum mute sets are great add-on sales for entry-level drum sets.

Single Mutes

Item#	Description	Retail
S0-6	6" Sound Off Tom Mute	\$7.99
S0-8	8" Sound Off Tom Mute	\$8.99
S0-10	10" Sound Off Tom Mute	\$9.99
S0-12	12" Sound Off Tom Mute	\$10.99
S0-13	13" Sound Off Tom Mute	\$11.99
S0-14	14" Sound Off Tom Mute	\$12.99
S0-15	15" Sound Off Tom Mute	\$14.99
S0-16	16" Sound Off Tom Mute	\$16.99
SOBASS	Sound Off Bass Mute	\$64.99
SO-CYM	Sound Off Cymbal Mute	\$9.99
S014HAT	14" Hi-Hat Mute	\$19.99
S020RIDE	20" Ride Mute	\$28.99
S022RIDE	22" Ride Mute	\$31.99

Assortments

Item#	Description	Retail
S0-0244	Sound Off Drum Mute Pak—Fusion Sizes	\$41.99
S0-2346	Sound Off Drum Mute Pak—Standard Sizes	\$46.99
SOSETFSN	Sound Off Box Set—Fusion	\$154.99
SOSETSTD	Sound Off Box Set—Standard	\$159.99

SOSETFSN
SOSETSTD



S0-0244
S0-2346

marching snare batter



Hybrid Series Snare Batter

By utilizing two unique high-tensile fibers, one chosen for flexibility and the other for durability, the Hybrid marching snare batter achieves a much softer feel, greater sensitivity, and a broader dynamic range while enhancing projection and durability.

Grey Batter			White Batter		
Item#	Diameter	Retail	Item#	Diameter	Retail
SB13MHG	13"	\$100.00	SB13MHW	13"	\$100.00
SB14MHG	14"	\$108.00	SB14MHW	14"	\$108.00



Hybrid-S Series Snare Batter

Inspired from the design of the award-winning Hybrid batter series, the Hybrid-S batter features two unique fibers that, when blended together, deliver a soft and sensitive feel with a warm, full, and tonally rich sound with superior snare response desired by the world's top marching ensembles. Without sacrificing durability, the Hybrid-S achieves a softer feel perfect for younger hands, and wider response that makes smaller lines sound big.

Item#	Diameter	Retail
SB13MHSB	13"	\$89.99
SB14MHSB	14"	\$94.99

marching snare sides



Hybrid Series Snare Side

By imbedding high-tensile fibers in an open weave pattern between two ultra-thin layers of clear film, the Hybrid marching snare side head produces the sound and sensitivity of a polyester bottom with a resistance to stretch that is closer to Kevlar™.

Grey Batter		
Item#	Diameter	Retail
SS13MH1	13"	\$60.00
SS14MH1	14"	\$64.00



MX5™ Snare Side Head (5mil)

The 5mil, thin aramid fiber/polyester laminate gives the MX5 maximum snare response, while a thin polyester overtone control ring reinforces the edge durability and eliminates unwanted overtones, further enhancing articulation.

Item#	Diameter	Retail
SS13MX5	13"	\$85.00
SS14MX5	14"	\$89.00



MS3™ Polyester Snare Side Head

MS3 clear Polyester snare side head delivers a dark, rich sound. A 2mil flap helps suppress unwanted overtones while providing reinforcement at the collar to increase longevity.

Item#	Diameter	Retail
SS13MS3C	13"	\$26.00
SS14MS3C	14"	\$27.00

marching tenor & bass heads

Corps Clear™ Tenor Heads

The 2-ply design with 6.5mil top-ply and 10mil bottom-ply not only delivers clarity of tone over the drum but enables the drums to cut through the ensemble in clear and discernible pitches to reach out front and into the stands. The extra thickness (16.5mil total) compared to standard tenor heads (14-15mil total) make the Corps Clear more durable. This added durability not only prolongs the life of the head but keeps them in tune longer.

Item#	Diameter	Retail	Item#	Diameter	Retail
TT06CC	6"	\$26.00	TT12CC	12"	\$30.00
TT08CC	8"	\$27.00	TT13CC	13"	\$32.00
TT10CC	10"	\$28.00	TT14CC	14"	\$34.00



MX™ & MS™ Tenor Heads

The MX tenor heads are designed with an advanced hoop concept that prevents pull-out. The MX Frost are made using two 7mil plies of tonally rich and durable film with a unique "frosted" coating that produces a warm, but resonant tone.

MS Clear			MX Frosted		
Item#	Diameter	Retail	Item#	Diameter	Retail
TT06MSC	6"	\$26.00	TT06MXF	6"	\$26.00
TT08MSC	8"	\$27.00	TT08MXF	8"	\$27.00
TT10MSC	10"	\$28.00	TT10MXF	10"	\$28.00
TT12MSC	12"	\$30.00	TT12MXF	12"	\$30.00
TT13MSC	13"	\$32.00	TT13MXF	13"	\$32.00
TT14MSC	14"	\$34.00	TT14MXF	14"	\$34.00

MX White			MX Black		
Item#	Diameter	Retail	Item#	Diameter	Retail
TT06MXW	6"	\$26.00	TT06MXB	6"	\$26.00
TT08MXW	8"	\$27.00	TT08MXB	8"	\$27.00
TT10MXW	10"	\$28.00	TT10MXB	10"	\$28.00
TT12MXW	12"	\$30.00	TT12MXB	12"	\$30.00
TT13MXW	13"	\$32.00	TT13MXB	13"	\$32.00
TT14MXW	14"	\$34.00	TT14MXB	14"	\$34.00



MX™ White Bass Heads

The 10mil single-ply MX1 Marching Bass head is equipped with a unique tone-damping system that enhances articulation and focuses low-end. A series of felt damping arcs can be manipulated for indoor or outdoor marching. The MX2 utilizes the same tone-damping system as the MX1, but features 2 plies of 7.5mil white film for enhanced durability, attack, focus, and projection. It's ideal for indoor use.

MX1 (1-ply) White			MX2 (2-ply) White		
Item#	Diameter	Retail	Item#	Diameter	Retail
BD16MX1W	16"	\$80.00	BD16MX2W	16"	\$80.00
BD18MX1W	18"	\$86.00	BD18MX2W	18"	\$86.00
BD20MX1W	20"	\$92.00	BD20MX2W	20"	\$92.00
BD22MX1W	22"	\$100.00	BD22MX2W	22"	\$100.00
BD24MX1W	24"	\$108.00	BD24MX2W	24"	\$108.00
BD26MX1W	26"	\$116.00	BD26MX2W	26"	\$116.00
BD28MX1W	28"	\$128.00	BD28MX2W	28"	\$128.00
BD30MX1W	30"	\$142.00	BD30MX2W	30"	\$142.00
BD32MX1W	32"	\$156.00	BD32MX2W	32"	\$156.00



MX™ Black Bass Heads

The MX Black Marching Bass heads produce a bright tone and are equipped with the same tone damping system as the MX White, which enhances articulation and focuses low-end. A series of felt damping arcs can be manipulated for indoor or outdoor marching.

MX1 (1-ply) Black			MX2 (2-ply) Black		
Item#	Diameter	Retail	Item#	Diameter	Retail
BD16MX1B	16"	\$90.00	BD16MX2B	16"	\$90.00
BD18MX1B	18"	\$96.00	BD18MX2B	18"	\$96.00
BD20MX1B	20"	\$102.00	BD20MX2B	20"	\$102.00
BD22MX1B	22"	\$110.00	BD22MX2B	22"	\$110.00
BD24MX1B	24"	\$118.00	BD24MX2B	24"	\$118.00
BD26MX1B	26"	\$126.00	BD26MX2B	26"	\$126.00
BD28MX1B	28"	\$138.00	BD28MX2B	28"	\$138.00
BD30MX1B	30"	\$152.00	BD30MX2B	30"	\$152.00
BD32MX1B	32"	\$166.00	BD32MX2B	32"	\$166.00



MS1™ White Bass Heads

This traditional-sounding, smooth white, 10mil single-ply head gives discerning drummers the option to customize their sound with the damping system of their choice. With durability equal to the MX bass head series, these heads will project warm, musical tones indoors and outdoors.

Item#	Diameter	Retail	Item#	Diameter	Retail
BD16MS1W	16"	\$62.00	BD26MS1W	26"	\$92.00
BD18MS1W	18"	\$65.00	BD28MS1W	28"	\$102.00
BD20MS1W	20"	\$69.00	BD30MS1W	30"	\$112.00
BD22MS1W	22"	\$76.00	BD32MS1W	32"	\$122.00
BD24MS1W	24"	\$84.00			

marching tenor heads

System Blue™ Tenor Heads

Designed in cooperation with the Blue Devils percussion staff, the System Blue tenor head is a 2-ply design with 7mil top-ply and 7.5mil bottom. This combination delivers tonal clarity and projection while also increasing durability and pitch stability, reducing the need for frequent tuning. The series also utilizes Evans' unique Sound Shaping Technology™, a damping technique that targets unwanted overtones and provides the control needed to enhance attack, projection, and note definition. The damping pattern on each head also provides a visual reference for the optimal 'playing zone' for each drum, offering a target for less experienced lines.



The heads sound great. They last longer than any other head we've had on our drums and they look pretty cool too.

scott johnson, the blue devils

Item#	Diameter	Retail	Item#	Diameter	Retail
TT06SB1	6"	\$26.00	TT12SB1	12"	\$30.00
TT08SB1	8"	\$27.00	TT13SB1	13"	\$32.00
TT10SB1	10"	\$28.00	TT14SB1	14"	\$34.00

concert snare heads



Strata™ Concert Snare Heads

The Strata Concert Snare heads yield a darker timbre with a warm, calfskin-like response. The heads have a natural sustain with midrange overtones. The 700 series (7.5mil) is designed for sensitivity and expression, whereas the 1000 series (10mil) is designed for more robust playing. Strata Staccato comes with a 2mil overtone control ring for increased articulation in either thickness.

Strata 700 (7.5mil)		
Item#	Diameter	Retail
CS14S	14"	\$26.50

Strata Staccato 700 (7.5mil)		
Item#	Diameter	Retail
CS14SS	14"	\$31.00

Strata 1000 (10mil)		
Item#	Diameter	Retail
CT14S	14"	\$26.50

Strata Staccato 1000 (10mil)		
Item#	Diameter	Retail
CT14SS	14"	\$31.00



The concert snare drum heads have a huge dynamic range and the best feel of any synthetic head I've ever played.

tom freer,
cleveland symphony orchestra

concert tom & bass heads



Strata™ 1000 Concert Tom Heads

As the midrange voice within the Strata family, a calfskin-colored coating provides the 10mil Strata Concert Tom heads with a warm, round tone with a darker fundamental.

Item#	Diameter	Retail
CT06S	6"	\$20.50
CT08S	8"	\$21.50
CT10S	10"	\$22.50
CT12S	12"	\$23.50
CT13S	13"	\$25.00

Item#	Diameter	Retail
CT14S	14"	\$26.50
CT15S	15"	\$28.00
CT16S	16"	\$29.50
CT18S	18"	\$37.00



Strata™ Concert Bass Heads

The Strata Concert Bass Head is a synthetic head with the appearance, warmth, and full-bodied tone of calfskin. It features mid-range attack with rich depth of sustain and projection. Available with or without a Central Power Dot, which deepens the fundamental.

Strata 1000 (10mil)		
Item#	Diameter	Retail
CB2810S	28"	\$136.00
CB3010S	30"	\$142.00
CB3210S	32"	\$152.00
CB3610S	36"	\$166.00
CB4010S	40"	\$180.00

Strata 1400 (14mil)		
Item#	Diameter	Retail
CB3614S	36"	\$166.00
CB4014S	40"	\$180.00

Strata 1000 w/ Power Center™		
Item#	Diameter	Retail
CB2810SD	28"	\$140.00
CB3010SD	30"	\$146.00
CB3210SD	32"	\$156.00
CB3610SD	36"	\$170.00
CB4010SD	40"	\$184.00

Strata 1400 w/ Power Center™		
Item#	Diameter	Retail
CB3614SD	36"	\$170.00
CB4014SD	40"	\$184.00

timpani heads



Orchestral Timpani Heads

Our Orchestral Series timpani head pre-tensioned for tuning consistency, has a black, powder-coated steel insert ring that delivers desired effect when pedaled and affords additional support once the head is under tension. It will perform magnificently at *ppp* with soft mallets, yet will not break up or sound harsh at *fff*. Through all this, it retains definite pitch.

Item#	Diameter	Retail
ET19	19"	\$152.00
ET20	20"	\$152.00
ET20625	20-5/8"	\$152.00
ET21	21"	\$152.00
ET22	22"	\$156.00
ET2250	22-1/2"	\$156.00
ET23	23"	\$156.00
ET2350	23-1/2"	\$156.00
ET24	24"	\$156.00
ET2425	24-1/4"	\$156.00
ET2450	24-1/2"	\$161.00
ET25	25"	\$161.00
ET2550	25-1/2"	\$161.00
ET26	26"	\$161.00
ET2650	26-1/2"	\$166.00
ET27	27"	\$166.00
ET2750	27-1/2"	\$166.00

Item#	Diameter	Retail
ET2775	27-3/4"	\$166.00
ET28	28"	\$166.00
ET2850	28-1/2"	\$171.00
ET29	29"	\$171.00
ET30	30"	\$171.00
ET3050	30-1/2"	\$171.00
ET31	31"	\$171.00
ET3150	31-1/2"	\$178.00
ET32	32"	\$178.00
ET33	33"	\$178.00
ET3350	33-1/2"	\$184.00
ET34	34"	\$184.00
ET3450	34-1/2"	\$184.00
ET3475	34-3/4"	\$193.00
ET35	35"	\$193.00
ET36	36"	\$193.00
ET37	37"	\$193.00

Strata™ Timpani Heads

Strata Timpani heads feature a smooth calfskin-colored coating perfected to prevent timpani mallet wear and enhance the sound of the head. Strata's warm tone, clarity of pitch, and articulation blend naturally with any ensemble. Strata Timpani heads are pre-tensioned with a black, powder-coated insert ring for tuning consistency and additional hoop support.

Item#	Diameter	Retail
EST19	19"	\$164.00
EST20	20"	\$164.00
EST20625	20-5/8"	\$164.00
EST21	21"	\$164.00
EST22	22"	\$168.00
EST2250	22-1/2"	\$168.00
EST23	23"	\$168.00
EST2350	23-1/2"	\$168.00
EST24	24"	\$168.00
EST2425	24-1/4"	\$168.00
EST2450	24-1/2"	\$173.00
EST25	25"	\$173.00
EST2550	25-1/2"	\$173.00
EST26	26"	\$173.00
EST2650	26-1/2"	\$178.00
EST27	27"	\$178.00
EST2750	27-1/2"	\$178.00

Item#	Diameter	Retail
EST2775	27-3/4"	\$178.00
EST28	28"	\$178.00
EST2850	28-1/2"	\$185.00
EST29	29"	\$185.00
EST30	30"	\$185.00
EST3050	30-1/2"	\$185.00
EST31	31"	\$185.00
EST3150	31-1/2"	\$194.00
EST32	32"	\$194.00
EST33	33"	\$194.00
EST3350	33-1/2"	\$203.00
EST34	34"	\$203.00
EST3450	34-1/2"	\$203.00
EST3475	34-3/4"	\$215.00
EST35	35"	\$215.00
EST36	36"	\$215.00
EST37	37"	\$215.00



I'm excited about the future of Evans products. Those who are purchasing from Evans can be confident they are getting the top of the line.

chip ross, the eastman school of music

timpani head reference chart

Manufacturer	Bowl Inches	Size cm	Evans Item#	
Adams (Philharmonic, Philharmonic Dresden Classic*)	20*	50.8*	.23	
	23*	58.4*	.2550	
	25	63.5	.2750	
	26*	66.0*	.2850	
	28	71.1	.3050	
	29*	73.7*	.32	
	30	76.2	.33	
32*	81.3*	.3475		
Adams (Symphonic, Professional, & Universal)	20	50.8	.22	
	23	58.4	.25	
	26	66.0	.28	
	29	73.7	.31	
	32	81.3	.34	
Aehnelt (Munich & Dresden)	21.5	54.7	.24	
	22	55.9	.25	
	23	58.4	.26	
	25	63.5	.2775	
	26	66.0	.28	
	26.5*	67.3*	.2850	
	28	71.1	.31	
*Dresden Only	29	73.7	.32	
	31	78.7	.3350	
	32	81.3	.3450	
	American Drum (Continental & Dresden)	19	48.2	.22
		20	50.8	.23
		21.5	54.7	.24
		22	55.9	.25
23		58.4	.26	
24		60.9	.27	
25		63.5	.28	
26		66.0	.29	
27		68.6	.30	
28		71.1	.31	
29		73.7	.32	
29*		73.7*	.3150	
30		76.2	.33	
*Dresden Only	31	78.7	.34	
	31*	78.7*	.33	
	32	81.3	.35	
	33	83.8	.36	
	Dynasty (Grand Professional)	20	50.8	.22
		23	58.4	.25
		26	66.0	.28
		29	73.7	.31
		32	81.3	.34
		Goodman (Chain)	18	45.7
20			50.8	.22
22	55.9		.24	
23	58.4		.25	
24	60.9		.26	
25	63.5		.27	
26	66.0		.28	
27	68.6		.29	
28	71.1		.30	
29	73.7		.31	
30	76.2		.32	
31	78.7		.33	
Goodman (Dresden)	23		58.4	.2550
	23*	58.4*	.25	
	25	63.5	.2775	
	25*	63.5*	.28	
	27*	68.6*	.3050	
*Early Dresden Models	28	71.1	.31	
	GP Percussion (Standard & Baroque)	20	50.8	.23
		22*	55.9*	.2350
		24	60.0	.2650
		24*	60.9*	.2550
26		66.0	.2850	
29		73.7	.3150	
32		81.3	.35	

When choosing Evans Timpani Heads, substitute a prefix within the blank space to denote the model:
 'ET' - Evans Orchestral Timpani Head (opaque)
 'EST' - Evans Strata™ Timpani Head (calf-colored)

Manufacturer	Bowl Inches	Size cm	Evans Item#	
Hinger (Dresden or Cable)	20	50.8	.23	
	22	55.9	.25	
	23	58.4	.26	
	25	63.5	.28	
	28	71.1	.31	
	31	78.7	.34	
	32*	81.3	.3475	
Jenco (Dresden or Rotary)	23	58.4	.2650	
	25	63.5	.2750	
	26	66.0	.2750	
	29	73.7	.3050	
	30	76.2	.33	
	22	55.9	.2350	
	24	60.9	.26	
Kolberg	26	66.0	.28	
	29	73.7	.31	
	31	78.7	.33	
	Lefima (Dresden)	22	55.9	.25
		23	58.4	.26
		25	63.5	.27
		26	66.0	.28
28		71.1	.31	
30		76.2	.33	
22		55.9	.25	
Lefima (Voyager I & II)	25	63.5	.2650	
	26	66.0	.2775	
	28	71.1	.30	
	31	78.7	.30	
	Lefima (Light)	21.5	54.6	.23
		23	58.4	.25
		24	60.9	.26
26		66.0	.2775	
28		71.1	.30	
Walter Light (After 1986)		16	40.6	.19
		18	45.7	.21
	20	50.8	.23	
	21.5	54.7	.24	
	23	58.4	.26	
	24	60.9	.27	
	25	63.5	.28	
	26	66.0	.2850	
	28	71.1	.31	
	29	73.7	.3150	
	31	78.7	.34	
	32	81.3	.35	
	34	86.3	.37	
Ludwig & Ludwig Leedy & Ludwig W.F.L. Ludwig Slingerland	20	50.8	.20625	
	23	58.4	.2425	
	24*	60.9*	.25	
	25*	63.5*	.26	
	26	66.0	.27	
	27*	68.6*	.28	
	28*	71.1*	.29	
*Pre 1978 sizes	29	73.7	.30	
	30*	76.2*	.31	
	Ludwig Ringer/ Rogers (Double Suspension Bowl) (Grand Symphonic, Professional, Standard, Universal)	20	50.8	.22
		23	58.4	.25
		26	66.0	.28
29		73.7	.31	
32		81.3	.34	

Manufacturer	Bowl Inches	Size cm	Evans Item#	
Adams (Symphony Grand, Symphonic, Harmonic Series)	20	50.8	.22	
	23	58.4	.25	
	26	66.0	.28	
	29	73.7	.231	
	32	81.3	.34	
	New Yorker (Dresden & Chain)	20	50.8	.23
		22	55.9	.25
23		58.4	.26	
24		60.9	.27	
25		63.5	.28	
26		66.0	.29	
27		68.6	.30	
28		71.1	.31	
29		73.7	.32	
30		76.2	.33	
31		78.7	.34	
Ohio Timpani		20	50.8	.23
		24	60.9	.26
	26	66.0	.2850	
	29	73.7	.3150	
	31	78.7	.33	
	*Formerly Cleveland	22.5	55.9	.2350
		25	63.5	.26
28		71.1	.29	
30		76.2	.31	
32		81.3	.33	
Premier (Pro Symphonic Concert Copper)		22.5	55.9	.2550
		25	63.5	.28
	28	71.1	.31	
	30	76.2	.33	
	32	81.3	.35	
	Premier (Elite)	20	50.8	.2250
		23	58.5	.25
25		63.5	.2750	
28		71.1	.3050	
30		76.2	.32	
Gunther Ringer (German Model, Berlin)		20	50.8	.23
		22	55.9	.25
	23	58.4	.26	
	24	60.9	.27	
	25	63.5	.28	
	26	66.0	.29	
	27	68.6	.30	
	28	71.1	.31	
	29	73.7	.32	
	30	76.2	.33	
	31	78.7	.34	
	32	81.3	.35	
	Stotz (Cable)	23	58.4	.25
26		66.0	.29	
27		68.6	.30	
28		71.1	.31	
29		73.7	.32	
30		76.2	.33	
31		78.7	.34	
32	81.3	.35		
Yamaha (3000, 4100 & 4200)	23	58.4	.25	
	26	66.0	.28	
	29	73.7	.31	
	32	81.3	.34	
	Yamaha (6100, 6200)	20	50.8	.22
		23	58.4	.25
		26	66.0	.28
29		73.7	.31	
32		81.3	.34	
Yamaha (7100, 7200*)		20	50.8	.22
		23*	58.4	.25
	24	60.9	.26	
	26*	66.0*	.28	
	27	68.6	.29	
	29*	73.7*	.31	
	32*	81.3*	.34	
Yamaha (7100, 7200*)	20	50.8	.22	
	23	58.4	.25	
	26	66.0	.28	
	29	73.7	.31	
	32	81.3	.34	

displays

Practice Pad Displays and Assortments (or create your own mix)

Display Components

Item#	Description	Small Display Parts Quantity	Large Display Parts Quantity
EVUMS1	Modular UMS - Main	1	2
EVUMS2	Modular UMS - End Cap	1	1
E10PD-E	Practice Pad Display Rack	1	1
EVUMS-SIGNKIT	Signage Kit	1	1

Suggested Display Assortments

Item#	Description	Small Display (HQUMSSM)	Large Display (HQUMSLG)
RealFeel™ Practice Pads			
RF6GM	6" Mountable Speed Pad	10	10
RF12D	12" 2-Sided Pad	5	5
RFBASS	Bass Pad	2	5
ARF7GM	Apprentice Pad	5	10
ARFSTD	Practice Pad Stand	2	3
SoundOff™ Drum Mutes			
S02ORIDE	20" Ride Mute		5
S014HAT	14" Hi-Hat Mute		5
S0-CYM	Crash Mute (16" - 20")		10
SOBASS	Universal Bass Mute		3
SOSETFSN	Fusion Box Set	3	3
SOSETSTD	Standard Box Set	3	3
Total Retail Value		\$2,024.70	\$2,919.43



Accessories Display and Assortments (shown with small Practice Pad assortment)

Accessories Display Components

Item#	Description	Display Parts Qty
EVUMS1	Modular UMS - Main	1
EVUMS2	Modular UMS - End Cap	1
EVUMS-SIGNKIT	Signage Kit	1

Suggested Accessories Display Assortment

Item#	Description	Assortment Qty (EVUMSACC1)
EQPAD	EQ Pad Bass Drum Damper	3
DADK	Magnetic Head Drum Key	5
DATK	Torque Drum Key	5
EQPAF1	AF Patch - Kevlar Single Pedal	10
EQPB1	EQ Patch - Nylon Single Pedal	10
P1420	14" Custom Series Snare - 20 Strand	5
E1416	14" Equalizer Series Snare - 16 Strand	5
CPS1420	14" Custom Pro Series - 20 Strand Steel	5
CPB1420	14" Custom Pro Series - 20 Strand Brass	5
ER-SNARE	E-Ring Snare Pack	10
Total Retail Value		\$1,522.80



displays & assortments

MODULAR UMS DISPLAY SYSTEM

The Modular UMS (Universal Merchandising System) is quick to assemble and can hold a full variety of Evans and Puresound percussion accessories. Start with a single panel display for a small percussion department or use it as an impulse purchase kiosk near the cash register to inspire those last minute add-on sales. Attach a second panel, or third panel in just minutes to expand the display space and continue to daisy-chain the displays together as your Evans and Puresound business grows.



Drumhead Display Components

Item#	Description	55pc. Display Parts Quantity	110pc. Display Parts Quantity	165pc. Display Parts Quantity
EVUMS1	Modular UMS - Main Panel	1	2	3
EVUMS2	Modular UMS - End Cap	1	1	1
EMS-SB	EMS Small Basket Set	1	1	2
EMS-MB	EMS Small Basket Set	1	2	3
EMS-LB	EMS Small Basket	1	2	3
EVUMS-VERTSIGN	Evans POP Signage Kit	1	1	1
EVUMS-SIGNKIT	Signage Kit	1	1	1

Suggested Drumhead Display Assortments (or create your own mix)

Item#	Description	55pc. Display (EVUMS55)	110pc. Display (EVUMS110)	165pc. Display (EVUMS165)
Snare Heads				
B14GPW	14" G Plus Coated White	2	4	4
B14G1D	14" Power Center			4
B14G1RD	14" Power Center Reverse Dot	3	6	6
B14ECSR	14" EC Reverse Dot	3	6	6
B14GEN	14" Genera			4
B14DRY	14" Genera Dry	2	5	5
B14HD	14" Genera HD			4
B14HDD	14" Genera HD Dry	3	6	6
B14STD	14" ST Dry			3
S14H30	14" 300	2	3	3



a note from sales

Ask your D'Addario representative for details and assistance in selecting the perfect fixture and product mix for your needs.

Suggested Assortments Continued

Item#	Description	55pc. Display (EVUMS55)	110pc. Display (EVUMS110)	165pc. Display (EVUMS165)
Bass Heads				
BD20EMAD	20" EMAD Batter Clear	1	2	2
BD22EMAD	22" EMAD Batter Clear	3	5	6
BD22GMAD	22" GMAD Batter Clear			3
BD22EMAD2	22" EMAD2 Batter Clear	3	5	5
BD22EMADONX	22" EMAD Onyx			2
BD22GB3	22" EQ3 Batter Batter Clear	1	3	3
BD22GB4	22" EQ4 Batter Batter Clear	1	3	3
BD22RB	22" EQ3 Resonant Black	1		2
BD22RONX	22" Onyx Resonant			
BD22REMAD	22" EMAD Resonant Black		2	2
Tom Heads				
TT08G1	8" G1 Clear			1
TT10G1	10" G1 Clear		1	1
TT12G1	12" G1 Clear		1	1
TT13G1	13" G1 Clear		1	1
TT14G1	14" G1 Clear		1	1
TT16G1	16" G1 Clear		1	1
B08G1	8" G1 Coated			1
B10G1	10" G1 Coated	1	2	2
B12G1	12" G1 Coated	2	3	3
B13G1	13" G1 Coated	1	1	1
B14G1	14" G1 Coated	4	4	4
B16G1	16" G1 Coated	1	2	2
B08GPW	8" G Plus Coated			1
B10GPW	10" G Plus Coated		2	2
B12GPW	12" G Plus Coated		3	3
B13GPW	13" G Plus Coated		1	1
B14GPW	14" G Plus Coated		2	2
B16GPW	16" G Plus Coated		2	2
TT08G2	8" G2 Clear			1
TT10G2	10" G2 Clear		2	2
TT12G2	12" G2 Clear		3	3
TT13G2	13" G2 Clear		1	1
TT14G2	14" G2 Clear		2	2
TT16G2	16" G2 Clear		2	2
B08G2	8" G2 Coated			1
B10G2	10" G2 Coated	2	2	2
B12G2	12" G2 Coated	3	3	3
B13G2	13" G2 Coated	1	1	1
B14G2	14" G2 Coated	2	2	3
B16G2	16" G2 Coated	2	2	3
TT08EC2S	8" EC2 Clear SST			1
TT10EC2S	10" EC2 Clear SST	2	2	2
TT12EC2S	12" EC2 Clear SST	3	4	3
TT13EC2S	13" EC2 Clear SST	1	1	1
TT14EC2S	14" EC2 Clear SST	2	3	3
TT16EC2S	16" EC2 Clear SST	2	3	3
B08ONX2	8" Onyx 2 Coated			1
B10ONX2	10" Onyx 2 Coated			2
B12ONX2	12" Onyx 2 Coated			3
B13ONX2	13" Onyx 2 Coated			1
B14ONX2	14" Onyx 2 Coated			2
B16ONX2	16" Onyx 2 Coated			2
TT10HG	10" Hydraulic Glass			2
TT12HG	12" Hydraulic Glass			3
TT13HG	13" Hydraulic Glass			1
TT14HG	14" Hydraulic Glass			3
TT16HG	16" Hydraulic Glass			3
Total Retail Value		\$2,049.50	\$4,014.00	\$6,150.50

